
NORTHEAST GLACIAL LAKES WATERSHED IMPROVEMENT AND PROTECTION PROJECT

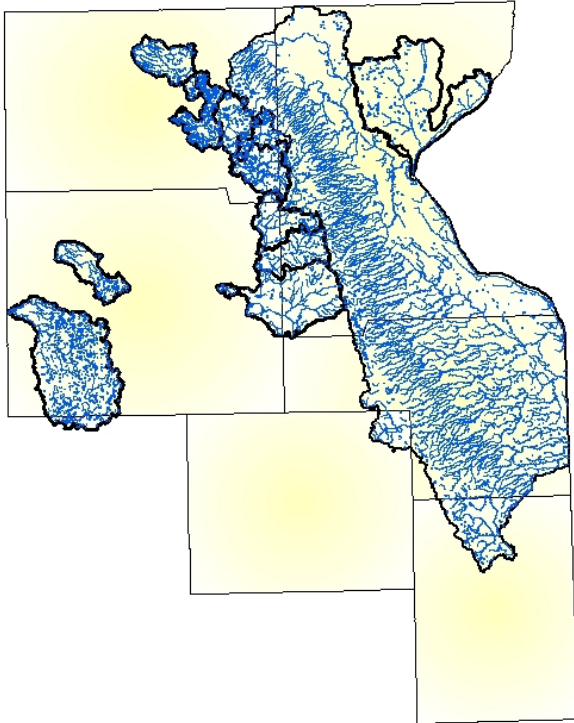


The goal of the Northeast Glacial Lakes Watershed Improvement and Protection Project is to improve and protect the water quality of northeast South Dakota lakes and reservoirs, streams and rivers, through the implementation of best management practices that reduce bacteria, nutrient, and sediment loads to these waterbodies.



The Northeast Glacial Lakes Watershed Improvement and Protection Project is a cooperative venture between the Day, Deuel, Grant, Marshall, and Roberts County Conservation Districts. Grants from the Environmental Protection Agency and the South Dakota Division of Resource Conservation and Forestry will provide funding for cost share and incentive payments to agricultural producers and landowners who implement conservation practices on their land. These practices are designed to reduce non-point source pollution in watersheds located within the five county project area. **Funds are available to implement livestock stream crossings, grassed waterways, forage and biomass plantings, shoreline and streambank stabilization, riparian buffers, and grazing system improvements (including cross fencing and water development).** Cost share rates vary from 60% to 75% depending on funding source and practice. The project also provides watershed landowners, lake property owners, recreational users, and students of all ages opportunities to learn about water quality issues through a wide variety of informational programs, workshops, and website.

Northeast Glacial Lakes Project Area



Project Lakes and Reservoirs:

Amsden Dam Reservoir
Big Stone Lake
Blue Dog Lake
Buffalo Lakes
Clear Lake (Marshall Co.)
Enemy Swim Lake
Lake Traverse
Minnewasta Lake
Nine Mile Lake
Pickerel Lake
Pierpont Dam Reservoir
South Red Iron Lake
Roy Lake
White Lake Dam

Upper Minnesota River Basin:

Little Minnesota River
Jim Creek
Jorgenson River
Whetstone River (North and South Forks)
Yellowbank River (North and South Forks)
Standfast Creek
Big Spring Creek
Big Coulee Creek

For More Information:

Visit the Project Website at;
www.neglwatersheds.org

Project Personnel

Dennis Skadsen
Project Coordinator
605/880-2406
dennis.skadsen@sd.nacdn.net

Or contact your local
Conservation District Office:

Day County
600 East Hwy 12 Suite 1, Webster, SD 57274
Phone: 605/345-4661 ext. 3

Deuel County
222 4th Ave. South, Clear Lake, SD 57226
Phone: 605/874-8225

Grant County
1102 South Dakota Street. Milbank, SD 57252
Phone: 605/432-6570 ext. 3

Marshall County
505 VanderHorck Ave., Britton, SD 57430
Phone: 605/448-2442 ext. 3

Roberts County
2018 East Hwy 10, Sisseton, SD 57262
Phone: 605/698-4731 ext. 3

